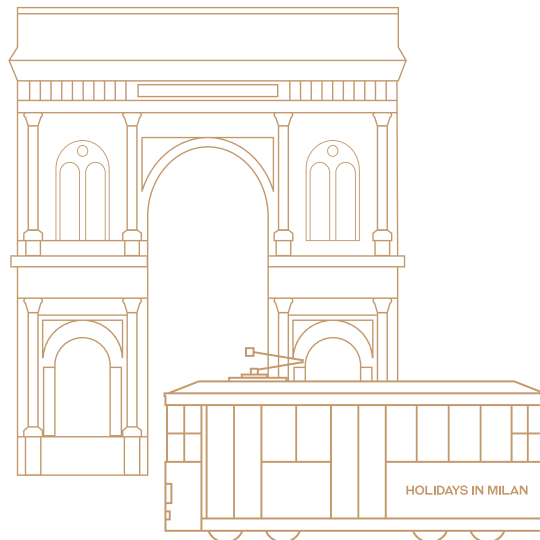


Pomellato
MILANO 1967

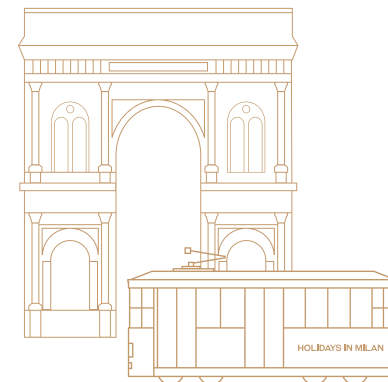
HOLIDAY GIFT GUIDE 2024



Step into the enchanting Pomellato wonderland, a world where the spirit of Milan comes alive.

You will quickly discover that this village is no ordinary place, it is the birthplace of Pomellato, and every corner is infused with the brand's distinctive Milanese style. Explore the Vittorio Emanuele II-inspired shopping gallery, showcasing exquisite creations.

Gather around the grand festive tree, adorned with sparkling jewels, and take a charming tram ride through the streets. Immerse yourself in the magic and joy of this extraordinary Milanese-inspired wonderland, where every moment is a treasure, and every jewel is a story waiting to be told.



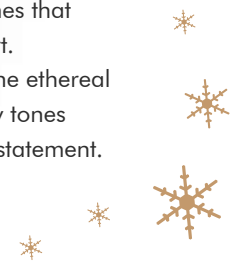
POMELLATO NUDO
COLLECTION

Give the gift of Nudo, Pomellato's most iconic gemstone creation, featuring a minimalist silhouette with a cut of 57 facets that shines brilliantly, no matter how it's worn.





This Holiday Season, let your imagination soar with a vibrant spectrum of gemstones that will delight the playful at heart. Pomellato's captivating hues, such as the ethereal sky blue topaz and the lush, earthy tones of prasiolite, are designed to make a statement.



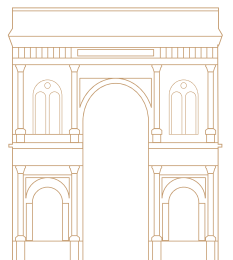


From dawn to dusk, let Pomellato be your constant companion. Our exquisite creations showcase the perfect balance of exuberance and elegance, designed to effortlessly transition from day to night.



*
*
*
*
*
**POMELLATO ICONICA
COLLECTION**

Pomellato's Iconica collection epitomizes Milanese design, its boldness symbolizing strength. Featuring clean lines and smooth curves that captivate the eye. Crafted with the brand's renowned goldsmithing heritage, an Iconica piece makes for an enchanting and meaningful gift this Holiday Season.





Iconica's jewels effortlessly blend striking modernity with timeless elegance, transforming every moment into an extraordinary experience.

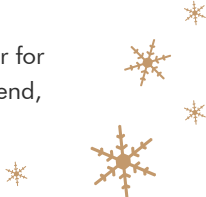


Iconica jewels, masterfully crafted from sculpted rose gold and adorned with brilliant white diamonds, provide the perfect finishing touch to elevate any festive ensemble.



POMELLATO TOGETHER COLLECTION

Pomellato celebrates the beauty of love with the Pomellato Together collection. These understated yet meaningful creations are the perfect way to express your appreciation and affection, whether for a romantic partner, a cherished friend, or as a gesture of self-love.





Pomellato Together features two ellipses gracefully joined by a link, embodying the strength of unity in a timeless jewel.

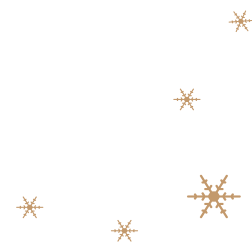
This meaningful design is destined to become a cherished heirloom, passed down through generations as a symbol of everlasting love and connection.

* * *

POMELLATO POM POM DOT COLLECTION

* * *

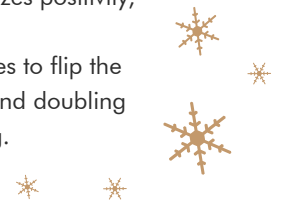
The Pom Pom Dot collection, Pomellato's playful line of button-shaped gemstones can be worn two ways, embodying the perfect spirit of joy and versatility for this festive season.





Pom Pom Dot, designed as a modern day emblem, features a rounded silhouette that symbolizes positivity, connection, and protection.

This unique design allows your loved ones to flip the pendant, revealing a second gemstone and doubling the joy of giving and receiving.



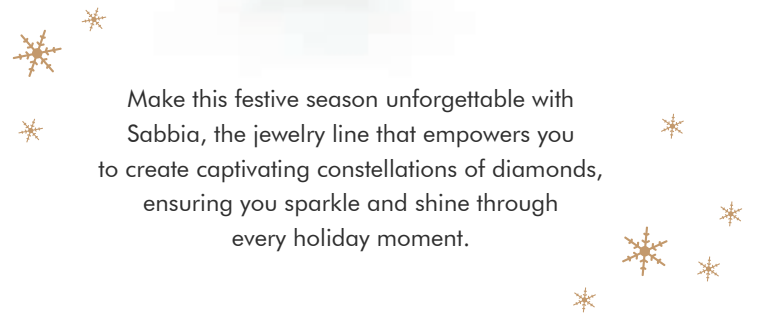
POMELLATO SABBIA COLLECTION

Embrace your unique style with Sabbia,
Pomellato's diamond pavé collection
that presents an innovative approach
to wearing exquisite jewels for every occasion.





Make this festive season unforgettable with Sabbia, the jewelry line that empowers you to create captivating constellations of diamonds, ensuring you sparkle and shine through every holiday moment.



POMELLATO CATENE COLLECTION

Pomellato's chain mastery, honed since the brand's inception, shines in the Catene collection. This Milanese masterpiece honors Pomellato's legacy, blending contemporary style with timeless elegance.

Perfect for holidays and beyond, Catene embodies the brand's enduring expertise in innovative, luxurious chain craftsmanship.





Pomellato's skilled artisans have crafted the iconic chain link with impeccable curves that drape effortlessly on the skin. Select a bold Catene piece for your loved one, creating an unforgettable memory that will be cherished for a lifetime.

Pomellato

MILANO 1967

HOLIDAY GIFT GUIDE 2024



Ring in rose and white gold with sky blue topaz and white diamonds on rhodium-plated white gold.

Ring in rose and white gold with white diamonds on rhodium-plated white gold.

Ring in rose and white gold with prasiolite and white diamonds on rhodium-plated white gold.



Necklace with pendant in white and rose gold with white diamonds on rhodium-plated white gold.

Earrings in rose and white gold with sky blue topazes and white diamonds on rhodium-plated white gold.

Maxi ring in white and rose gold with London blue topaz and white diamonds on rhodium-plated white gold.

Maxi ring in white and rose gold with white diamonds on rhodium-plated white gold.

Maxi ring in white and rose gold with sky blue topaz and white diamonds on rhodium-plated white gold.



Bracelet in rose gold with prasiolites and white diamonds on white rhodium-plated rose gold.

Bracelet in rose gold with sky blue topazes and white diamonds on white rhodium-plated rose gold.

Classic ring in rose and white gold with prasiolite.

Necklace with pendant in rose and white gold with prasiolite and white diamonds on rhodium-plated white gold.

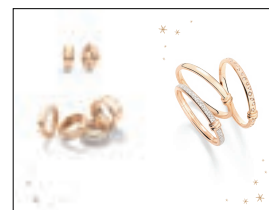
Necklace with pendant in rose and white gold with sky blue topaz and white diamonds on rhodium-plated white gold.

Necklace with pendant in rose and white gold with London blue topaz and white diamonds on rhodium-plated white gold.



Necklace with pendant in rose gold with white diamonds on white rhodium-plated rose gold.

Necklace with pendant in rose and white gold with white diamonds on white rhodium-plated rose gold.



Earrings in rose gold.

Extra slim ring in rose gold.

Slim ring in rose gold with white diamonds.

Slim ring in rose gold with white diamonds on white rhodium-plated rose gold.

Medium-large ring in rose gold.

Bracelet in rose gold with white diamonds.

Bracelet in rose gold.

Bracelet in rose gold with white diamonds on white rhodium-plated rose gold.



Necklace in rose gold.
 Bracelet in rose gold with white diamonds on white rhodium-plated rose gold.
 Bracelet in rose gold.
 Bracelet in rose gold with white diamonds on white rhodium-plated rose gold.



Ring in rose gold with brown diamonds on black rhodium-plated rose gold and white diamonds on white rhodium-plated rose gold.



Ring in rose gold with brown diamonds on black rhodium-plated rose gold.
 Ring in rose gold.
 Ring in rose gold with white diamonds on white rhodium-plated rose gold.
 Ring in rose gold with white diamonds on white rhodium-plated rose gold.
 Ring in rose gold with white diamonds on white rhodium-plated rose gold.



Necklace with pendant in rose and white gold with one brown diamond, one white diamond and white diamonds on white rhodium-plated rose gold.
 Ring in rose gold with white diamonds on white rhodium-plated rose gold.
 Ring in rose gold with brown diamonds on black rhodium-plated rose gold.
 Ring in rose gold with white diamonds on white rhodium-plated rose gold.
 Ring in rose and white gold with one white diamond and brown diamonds on black rhodium-plated rose gold.
 Ring in rose gold with one brown diamond and white diamonds on white rhodium-plated rose gold.
 Necklace in rose gold with brown diamonds and white diamonds.



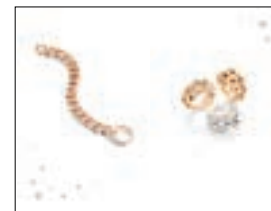
Earrings in rose gold with white diamonds on white rhodium-plated rose gold.
 Bracelet in rose gold with white diamonds on white rhodium-plated rose gold.
 Bracelet in rose gold.
 Bracelet in rose gold with brown diamonds on black rhodium-plated rose gold.
 Necklace with pendant in rose gold with white diamonds on white rhodium-plated rose gold.
 Necklace with pendant in rose gold with white diamonds on white rhodium-plated rose gold.



Necklace in rose gold with white diamonds.



Necklace with pendant in rose gold with white diamonds on white rhodium-plated rose gold and white mother-of-pearl.
 Necklace with pendant in rose gold with white mother-of-pearl, grey mother-of-pearl and white diamonds on white rhodium-plated rose gold.
 Necklace with pendant in rose gold with malachite, white mother of-pearl and white diamonds.

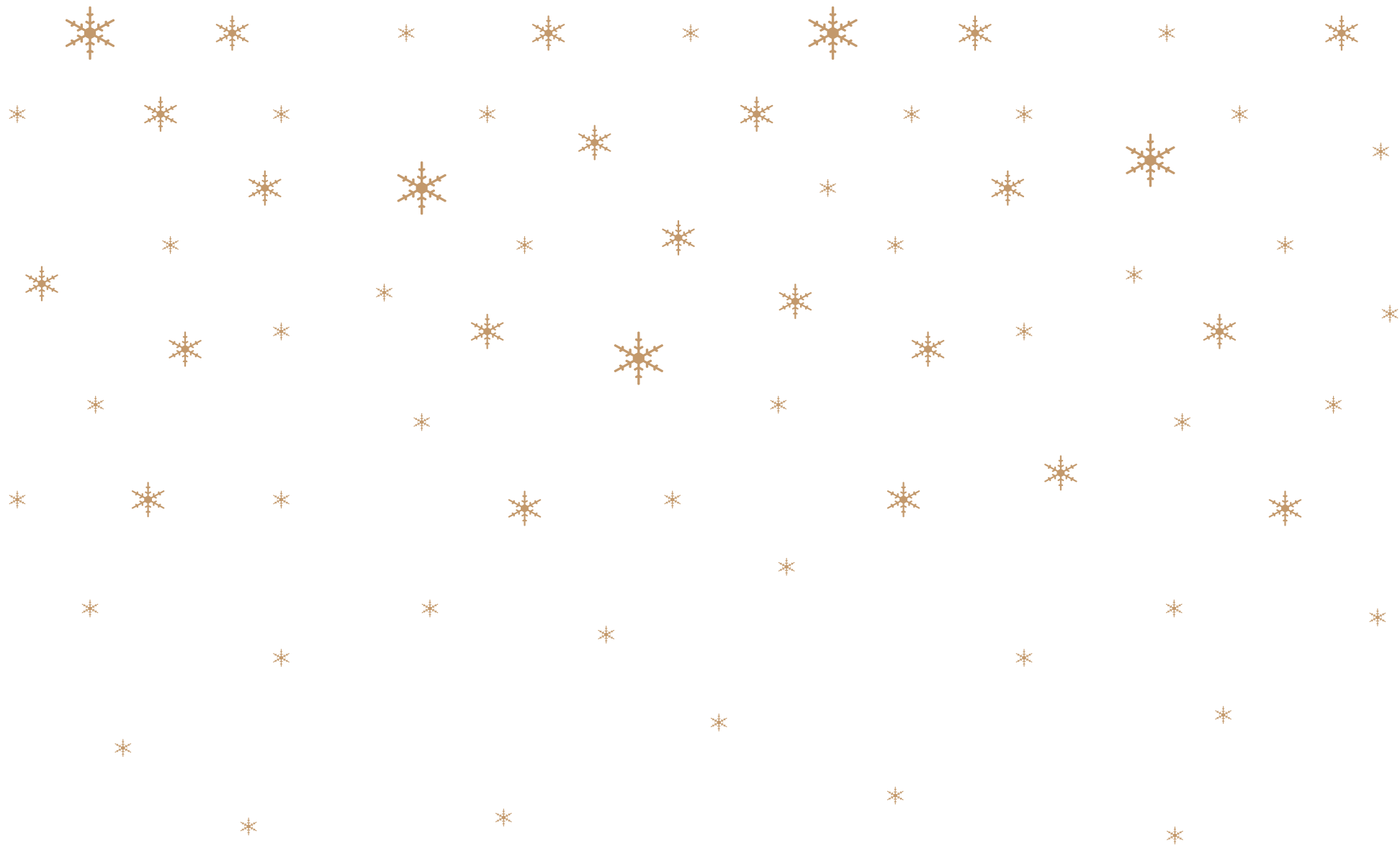


Bracelet in rose gold with white diamonds.
 Ring in rose gold.
 Ring in rose gold with white diamonds.
 Ring in rhodium-plated white gold with white diamonds.



Necklace with pendant in rose gold with malachite, white mother of-pearl and white diamonds.
 Earrings in rose gold with malachites and white diamonds.
 Bracelet in rose gold with malachite, white mother-of-pearl and white diamonds.
 Bracelet in rose gold with white mother-of-pearl, grey mother-of-pearl and white diamonds on white rhodium-plated rose gold.
 Bracelet in rose gold with white diamonds on white rhodium-plated rose gold and white mother-of-pearl.

[Click here to discover more about the jewelry selection.](#)



Pomellato
MILANO 1967